



NEXT GENERATION



GREENLEE®

A Textron Company

WHAT'S CHANGING AROUND US?



For the last 20 years, Gator® battery-powered hydraulic tools have provided state-of-the-art technology to assist the electrical market.

With industry-leading technology and easy-to-use designs, Gator® tools help you work smarter on the jobsite. Cuts cable and crimps lugs and splices all in lightning fast time. With smart features such as Intelli-CRIMP® technology and Automatic Retraction Stop (ARS), you can always be sure that the job is done right.

However... The future of battery-powered hydraulic tools is about to begin

The modern jobsite has become much more demanding... higher quality, lower cost and more accountability are realities of today.

Your tools need to be able to adapt to meet these expectations.

- Assure your tools are performing consistently at a high level
- Make sure your tools are available when needed, minimize downtime
- Protect your tool investment
- Focus on safety and productivity to win
- Own tools that help you work **Faster. Safer. Easier.®**

WHAT CAN WE DO ABOUT IT?

Be More Productive

Increase the efficiency of your work with real-time communication technology

Innovate

New Bluetooth® networked tools interface to diagnose any tool or a fleet of tools to keep optimal overview of inventory

Improve Safety

Updated designs focused on optimizing the tool centre of gravity not only allows you to be more comfortable, but also more productive

More Power

High capacity Makita® battery platform with active battery monitoring system improves your battery supply

The Bluetooth® word mark and logos are registered trademarks owned by Bluetooth SIG, Inc.
Makita® is registered trademark of Makita® Corporation.

KEY INNOVATIONS IN TECHNOLOGY



With industry-leading technology, ergonomic and easy-to-use designs, Gator® tools help you work smarter on the jobsite. Cut cable, crimp lugs and splice in lightning fast time.



Select Gator® tools feature Intelli-CRIMP® technology – a unique pressure sensor that detects crimping force. This feature emits audible and visual alerts when a crimp is below specifications, protecting you and your tool.



Clear line of sight to the functional nature of the tool, Gator Eye® has now gone wireless. Bluetooth® reporting configuration in the standard tool allows for real time monitoring of tool diagnostics so you can ensure high performance levels and quality.

THE NEW DESIGN STANDARD

Innovative understanding of the working environment



1 LED display

Real-time communication of details associated with the tool, including battery charge, pressure level, and cycle information

2 Enhanced housing construction

Internal components of the tool are protected against dirt and water intrusion


3 Reverse tapered hand grip

Increases grip strength and optimal hand positioning to avoid user fatigue

4 Upgraded Power Supply

Improves power duration and includes battery protection and fuel gauge. Three year warranty included.

NEXT GENERATION STANDARD X MODEL

Description	Full line of Electro-hydraulic Crimping and Cutting Tools featuring Intelli-CRIMP® technology, Gator Eye® Diagnostic System, and Bluetooth® Communication
Tool Warranty	3 Years
Battery Platform	Makita® LXT® Lithium-Ion with LED Charge Level Indicator
Kit Batteries	
Battery Amp-Hours	2.0Ah or 4.0Ah
Battery Voltage	18V
Charger Configurations	12VDC, 120VAC, 230VAC
AC Adaptor Configurations	120VAC, 230VAC
Battery/Charger Warranty	3 Years
Packaging	Hard Side Case, Pouch (EK425LX)
Bare Tool Configuration	YES
Intelli-CRIMP® Technology	YES - Crimping Tools, Pump
Gator Eye™ Diagnostic System	YES
Bluetooth®	YES
LED Display	YES

LXT® is a trademark of Makita® Corporation



GATOR EYE® OVERVIEW

Gator Eye® Software

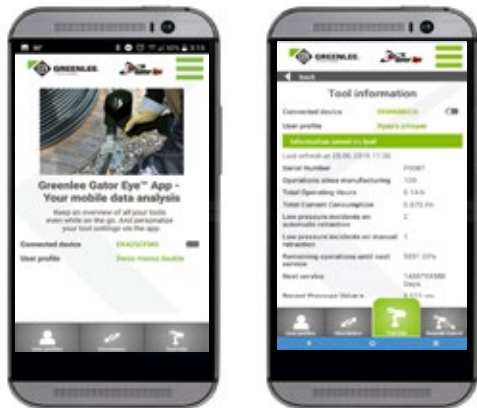
- Quality assurance and documentation
- Bluetooth® enabled on compatible PCs
- USB connection also available with Gator Eye® accessory

Gator Eye® App

- Keep an overview of all your tools while on the go.
- Personalize your tool settings via the app.
- Review GatorEye® data via smart phone
- With the GatorEye® app on your smart-phone or tablet, you can read off the most important tool data and create individual user profiles
- iOS® and Android™ platforms

Software designed to make connecting your mobile device simple

1. Download the application from Greenlee.com, Apple® App Store®, or Google Play™
2. Activate Bluetooth® on your PC or smart phone
3. Launch Gator Eye® application



GATOR EYE® DESKTOP SOFTWARE



*Go to greenlee.com software download



Gator Eye® desktop software screenshot

- A USB-powered device that is compatible with all Greenlee Gator® Tools
- Allows electrical contractors and utility companies to set service intervals and download work history reports
- Add user and inventory information to your Gator® tools, thereby better managing tool lives
- Software is free to download and available on our website

CAT. NO.	UPC NO.	DESCRIPTION
GATOR-EKG	19254	Gator® Tool Diagnostic and Programming Device

Android and Google Play are trademarks of Google Inc.
 Apple is a trademark of Apple Inc., registered in the U.S. and other countries.
 IOS is a trademark or registered trademark of Cisco in the U.S. and other countries.

INDUSTRY DEMANDS BETTER TOOLS

Knowing what your tools are doing leads to informed management decisions that help improve tool and operator performance. Greenlee Gator® products offer tool tracking and robust reporting capabilities to help you streamline your tool management so you can spend more time taking care of your customers and boosting your bottom line.



Use the i-connect web-based application for a broad range of potentials. The i-connect feature allows authorizations with your team using a simple rights and roles concept. Various access levels allow you to view different items of information on the registered products.

The screenshot shows the Greenlee i-connect web application interface. At the top, there is a navigation bar with the Greenlee logo, "Tool Inventory", "Tool Tracking", and user options like "Administrator", "Language", and "Logout". Below the navigation bar, there is a search bar and several action buttons: "Reset filter", "Add tool", "Delete tool", and "Change rows". The main content area displays a table with 6 columns: "Serial number", "Article number", "Total operation count", "Last operation", "Next service", "Total operating time", "Current consumption", and "Status". The table contains 6 rows of tool data. At the bottom of the table, there is a pagination bar showing "Showing from 1 to 6 from 6 Tools" and "0 tools selected".

	Serial number	Article number	Total operation count	Last operation	Next service	Total operating time	Current consumption	Status
1	P0047	EM23PT	37	3/8/2016	-	0.02 h	0.152 Ah	✓
2	P0048	EM8DT	0	-	-	-	-	✓
3	P0049	ESC10ST	0	-	-	-	-	✓
4	P0055	EM8DT	6271	3/8/2016	-	3.20 h	16.427 Ah	✓
5	P0057	EM23PT	1196	3/8/2016	-	0.79 h	4.876 Ah	✓
6	P0056	EM8DT	27	3/7/2016	-	0.04 h	0.311 Ah	✓

DETAILED WORK HISTORY.

Download, print, and store work information such as operating pressure, number of crimps/cuts, and battery information.

ACCOUNTABILITY.

Prove that the job was done correctly with operation and project-specific documentation.

DIAGNOSTICS.

Set and view maintenance intervals, and add user identifiable information to manage your inventory.

WORKS WITH ALL GATOR TOOLS (YEP, EVEN THE ONES FROM 1994)*

* Previous generation Gator® tools may not have all capabilities.



Intelligence

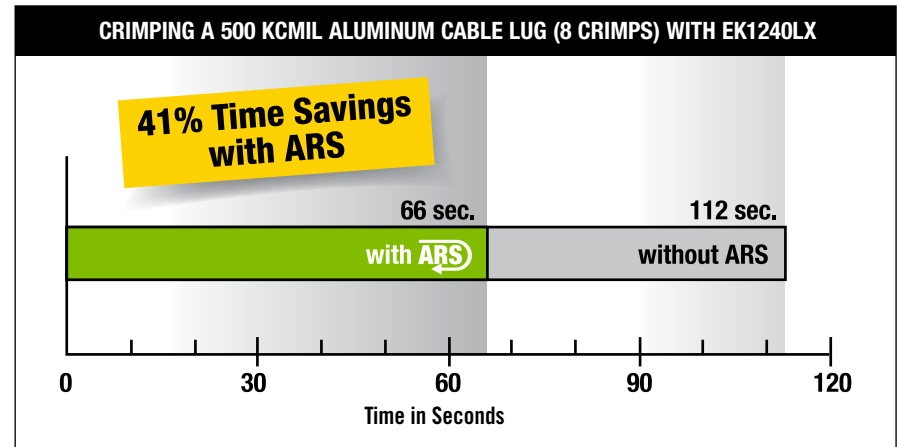
Greenlee Gator® crimping and cutting tools... investing in technology to improve productivity, safety and reliability

Monitors Pressure – 32 times every second to ensure proper force is applied at the crimping tool

Polices the Crimp – Alerts operator visually and audibly if cycle is not performed correctly

Retracts Automatically – Tool signals user that crimp is complete by retracting ram automatically

Saves Time – Smart tool minimizes the retraction distance after each cycle utilizing features such as Automatic Retraction Stop (ARS) which retracts the ram just enough to get ready for the next cycle, saving time and energy. Another feature is Retraction Stop Repeat (RSR) which allows the operator to partially retract the ram repeating the retraction for subsequent crimps.



After a cut or crimp, **Automatic Retraction Stop (ARS)** prevents full retraction of the ram, saving time when making multiple crimps.

Understanding what the tool is saying

RED BI-LED	WORK LED	AUDIO	DESCRIPTION
 20 sec			Glowing for 20 seconds after crimp, battery discharged
 2 x			Self check after battery insertion
 20 sec/2Hz			Flashing for 20 seconds at 2Hz after crimp = return for service
 20 sec/5Hz			Flashing for 20 seconds at 5Hz during high temperature = unit too hot
 20 sec glowing and 20 seconds flashing intermittently after crimp = service required and battery flat			
 1 x	 1 x		Error: the necessary oil pressure was not reached, or there is a manual retraction with the motor not running
 3 x	 3 x		Error: the necessary oil pressure with the motor running was not achieved

A full-page photograph of a male worker in profile, facing right. He is wearing a white hard hat, safety glasses, a grey long-sleeved shirt, orange safety harness, and orange protective sleeves. He is holding a black and silver crimping tool with a battery pack labeled '18V LITHIUM ION' and 'ECC'. The tool is being used on a metal power line component. The background shows a hazy, mountainous landscape under a cloudy sky. A white rectangular box with a thin border is centered over the worker's torso, containing the word 'CRIMPING' in white, bold, sans-serif capital letters.

CRIMPING

6 TON IN-LINE CRIMPER

EK425LX

- Intelli-CRIMP® technology includes a pressure sensor to monitor the crimping force of each crimp and provides the operator with a visual and audible alert if the pressure is below specifications
- In-line tool style is lightweight and very easy to control
- Crimping head rotates 350°
- LED work light illuminates dark work areas
- Available with 120V, 12V or 230V battery charger
- One-button operation
- LED display
- Bluetooth® enabled

CONNECTOR CAPACITY

- 5/8" Service Entrance Connectors: 10-1/0 AWG
- .840 Service Entrance Connectors: 1/0-4/0 AWG
- Aluminum "H" Taps: 6-4/0 AWG
- Copper "H" Taps: 10-2 AWG
- Copper Tension Splices: 6-2/0 AWG
- Aluminum Tension Splices: 6-4/0 AWG
- One Piece ACSR Tension Splices: 4-1/0 AWG
- Two Piece ACSR Tension Splices: 2 AWG-477 kcmil
- Aluminum Jumper Splices: 4 AWG-266.8 kcmil
- Stirrups: 2-4/0 AWG
- Aluminum Color-Coded Lugs and Splices: 8-4/0 AWG
- See page 18 for dies

CRIMPING JAWS



EK425LX



SPECIFICATIONS

- Crimping Force: 6 Tons (54kN)
- Length: 14-3/4" (375mm) without head or battery
- Width: 4" (108mm)
- Weight: 6.6 lbs (3kg)
- Battery: 18V 4.0Ah Li-ion
- Cycle Time: ~4 seconds
- Charge Time: 40 minutes

ERGONOMICS

- Maneuverability and reduced weight provide improved working postures
- In-line trigger strengthens grip biomechanics

EK425LX

CAT NO.	UPC NO.	DESCRIPTION
EK425LXD011	60905	Crimper, 6T Li-ion, STD, CJD30, 120V
EK425LXD012	60906	Crimper, 6T Li-ion, STD, CJD30, 12V
EK425LXD022	60907	Crimper, 6T Li-ion, STD, CJD30, 230V
EK425LXD0B	60908	Crimper, 6T Li-ion, STD, CJD30, Bare
EK425LXDBG11	60909	Crimper, 6T Li-ion, STD, CJD3BG, 120V
EK425LXDBG12	60910	Crimper, 6T Li-ion, STD, CJD3BG, 12V
EK425LXDBG22	60911	Crimper, 6T Li-ion, STD, CJD3BG, 230V
EK425LXDBGB	60912	Crimper, 6T Li-ion, STD, CJD3BG, Bare
EK425LXK11	60913	Crimper, 6T Li-ion, STD, CJK, 120V
EK425LXK12	60914	Crimper, 6T Li-ion, STD, CJK, 12V
EK425LXK22	60915	Crimper, 6T Li-ion, STD, CJK, 230V
EK425LXKB	60916	Crimper, 6T Li-ion, STD, CJK, Bare
EK425LXD11	60917	Crimper, 6T Li-ion, STD, CJD3, 120V
EK425LXD12	60918	Crimper, 6T Li-ion, STD, CJD3, 12V
EK425LXD22	60919	Crimper, 6T Li-ion, STD, CJD3, 230V
EK425LXDB	60920	Crimper, 6T Li-ion, STD, CJD3, Bare

ACCESSORIES

CAT NO.	UPC NO.	DESCRIPTION
05167	05167	18V 4.0Ah Li-ion Battery
52178	52178	120V Li-ion Battery Charger
52179	52179	230V Li-ion Battery Charger
52190	52190	12V Li-ion Battery Charger
12274	12274	Carrying Strap
CP1	22041	Tool Pouch

6 TON IN-LINE CRIMPER

EK628LX

- Intelli-CRIMP® technology includes a pressure sensor that monitors the crimping force of each crimp and provides the operator with a visual and audible alert if the force is below specifications
- In-line tool style is lightweight and very easy to control
- Crimping head rotates 350°
- LED work light illuminates dark work areas
- Used with Greenlee® KC4, KA4 and KD4 crimping dies
- Available with 120V, 12V or 230V battery charger or with 120V or 230V corded adapter in place of batteries and charger

SPECIFICATIONS

- Crimping Force: 12,000 lbs (53kN)
- Length: 18-1/2" (470mm)
- Width: 2-7/8" (73mm)
- Weight: 6 lbs (2.7kg)
- Battery: 18V 2.0Ah Li-ion
- Crimp Cycle Time: ~6 seconds
- Battery Charge Time: 30 minutes

CAPACITY

- 8 AWG to 600 kcmil copper color-coded connectors
- 8 AWG to 350 kcmil aluminum color-coded connectors

ERGONOMICS

- Significantly reduce extreme handle force required to compress a wire

CRIMPING JAWS



Also compatible with CJK



EK628LX

Crimping dies on page 18

EK628LX

CAT. NO.	UPC NO.	DESCRIPTION
EK628LX11	60939	Crimper, 6T Li-ion, STD, 120V
EK628LX12	60940	Crimper, 6T Li-ion, STD, 12V
EK628LX22	60941	Crimper, 6T Li-ion, STD, 230V
E628LX120	60942	Crimper, 6T Li-ion, STD, 120V AC
EK628LX230	60943	Crimper, 6T Li-ion, STD, 230V AC
EK628LXB	60944	Crimper, 6T Li-ion, STD, Bare

ACCESSORIES

CAT. NO.	UPC NO.	DESCRIPTION
52177	52177	18V 2.0Ah Li-ion Battery
52178	52178	120V Li-ion Battery Charger
52179	52179	230V Li-ion Battery Charger
52130	52130	12V Li-ion Battery Charger
25752	25752	Carrying Case
K22S1GL	03078	Die Kit for 8 AWG-600 kcmil Copper Connectors (Includes all copper die sets listed below and carrying case)
KD06AL	01631	Die Kit for 8 AWG-350 kcmil Aluminum Connectors (Includes all aluminum die sets listed on page 18 and carrying case)



4 TON IN-LINE CRIMPER

EK410LX

- Intelli-CRIMP® technology includes a pressure sensor that monitors the crimping force of each crimp and provides the operator a visual and audible alert if the force is below specifications
- In-line tool style is lightweight and very easy to control
- Crimping head rotates 350°
- Used with Greenlee® KC4, KA4 and KD4 crimping dies
- Available with 120V, 12V or 230V battery charger or with 120V or 230V corded adapter in place of batteries and charger

SPECIFICATIONS

- Crimping Force: 7,900 lbs (35kN)
- Length: 13-1/4" (337mm)
- Width: 2-7/8" (73mm)
- Weight: 4 lbs (1.8kg)
- Battery: 18V 2.0Ah Li-ion
- Crimp Cycle Time: ~4 seconds
- Battery Charge Time: 25 minutes

CAPACITY

- 8 AWG to 600 kcmil copper color-coded connectors
- 8 AWG to 350 kcmil aluminum color-coded connectors
- 5/8" service entrance connectors
- 840 service entrance connectors

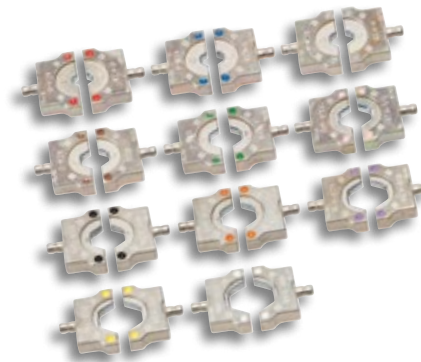


EK410LX

CAT. NO.	UPC NO.	DESCRIPTION
EK410LX11	60927	Crimper, 4T Li-ion, STD, 120V
EK410LX12	60928	Crimper, 4T Li-ion, STD, 12V
EK410LX22	60929	Crimper, 4T Li-ion, STD 230V
EK410LX120	60930	Crimper, 4T Li-ion, STD, 120V AC
EK410LX230	60931	Crimper, 4T Li-ion, STD, 230V AC
EK410LXB	60932	Crimper, 4T Li-ion, STD, Bare

ACCESSORIES

CAT. NO.	UPC NO.	DESCRIPTION
52177	52177	18V 2.0Ah Li-ion Battery
52178	52178	120V Li-ion Battery Charger
52179	52179	230V Li-ion Battery Charger
52180	52180	12V Li-ion Battery Charger
25752	25752	Carrying Case



Crimping Dies for 4 Ton EK410LX Tools

Crimping dies on page 17

6 TON CRIMPERS

EK622LX, EK622PLX



EK622LX

- Intelli-CRIMP® technology includes a pressure sensor that monitors the crimping force of each crimp and provides the operator a visual and audible alert if the force is below specifications
- In-line tool style is lightweight and very easy to control
- Crimping head rotates 350°
- Used with Greenlee® KC22 and KA22 series crimping dies
- Includes 04292 die adapters which can be used with all industry "W" style crimping dies and Greenlee® KD6 style dies



EK622PLX

SPECIFICATIONS (EK622LX)

- Crimping Force: 12,000 lbs (53kN)
- Length: 15-3/4" (438mm)
- Width: 2-7/8" (73mm)
- Weight: 6.5 lbs (3kg)
- Battery: 18V 2.0Ah Li-ion
- Crimp Cycle Time: ~4 seconds
- Battery Charge Time: 25 minutes



EK622LX

CAT. NO.	UPC NO.	DESCRIPTION
EK622LX11	60951	Crimper, 6T Li-ion, 120V
EK622LX12	60952	Crimper, 6T Li-ion, 12V
EK622LX22	60953	Crimper, 6T Li-ion, 230V
EK622LX120	60954	Crimper, 6T Li-ion, 120V AC
EK622LX230	60955	Crimper, 6T Li-ion, 230V AC
EK622LXB	60956	Crimper, 6T Li-ion, STD, Bare

EK622PLX

CAT. NO.	UPC NO.	DESCRIPTION
EK622PLX11	60963	Crimper P, 6T Li-ion, STD, 120V
EK622PLX12	60964	Crimper P, 6T Li-ion, STD, 12V
EK622PLX22	60965	Crimper P, 6T Li-ion, STD, 230V
EK622PLX120	60966	Crimper P, 6T Li-ion, STD, 120V AC
EK622PLX230	60967	Crimper P, 6T Li-ion, STD, 230V AC
EK622PLXB	60968	Crimper P, 6T Li-ion, STD, Bare

ACCESSORIES

CAT. NO.	UPC NO.	DESCRIPTION
52177	52177	18V 2.0Ah Li-ion Battery
05167	05167	18V 4.0Ah Li-ion Battery
52178	52178	120V Li-ion Battery Charger
52179	52179	230V Li-ion Battery Charger
52180	52180	12V Li-ion Battery Charger
25752	25752	Carrying Case
12274	12274	Carrying Strap
04292	04292	Die Adapter for "W" Type Dies

CAPACITY

- Copper Color-Coded Lugs and Splices, 600 kcmil (MCM)
- Aluminum Color-Coded Lugs and Splices, 350 kcmil (MCM)
- For capacity with other types of dies, see chart on page 18

12 TON PISTOL TYPE CRIMPERS

EK1230LX, EK1240LX



SPECIFICATIONS

- Crimping Force: 12 Tons (106kN)
- Length: 16-1/4" (80mm)
- Width: 3-1/8" (413mm)
- Height: 13-1/2" (343mm)
- Weight: 15 lbs (6.8kg)

ERGONOMICS

- Single trigger activation reduces repetitive motion injuries
- 350° head rotation enhances adjustability and reduces user effort

CAPACITY

- 8 AWG – 750 kcmil Cu & Al lugs and splices

EK1240LX

CAT. NO.	UPC NO.	DESCRIPTION
EK1240LX11	60983	Crimper, 12T Li-ion, STD, 120V
EK1240LX12	60984	Crimper, 12T Li-ion, STD, 12V
EK1240LX22	60985	Crimper, 12T Li-ion, STD, 230V
EK1240LX120	60986	Crimper, 12T Li-ion, STD, 120V AC
EK1240LX230	60987	Crimper, 12T Li-ion, STD, 230V AC
EK1240LXB	60988	Crimper, 12T Li-ion, STD, Bare

EK1230LX

CAT. NO.	UPC NO.	DESCRIPTION
EK1230LX11	60995	Crimper, 12T Li-ion, STD, 120V
EK1230LX12	60996	Crimper, 12T Li-ion, STD, 12V
EK1230LX22	60997	Crimper, 12T Li-ion, STD, 230V
EK1230LX120	60998	Crimper, 12T Li-ion, STD, 120V AC
EK1230LX230	60999	Crimper, 12T Li-ion, STD, 230V AC
EK1230LXB	61000	Crimper, 12T Li-ion, STD, Bare

ACCESSORIES

CAT. NO.	UPC NO.	DESCRIPTION
05167	05167	18V 4.0Ah Li-ion Battery
52178	52178	120V Li-ion Battery Charger
52179	52179	230V Li-ion Battery Charger
52180	52180	12V Li-ion Battery Charger
10118	10118	Carrying Case
12274	12274	Carrying Strap



Crimping Dies for 12 Ton Tools
Crimping dies on page 19

12 TON PISTOL TYPE CRIMPERS

EK1240CLX, EK1240KLX

- Forward handle pistol design provides optimal center of gravity
- Equipped with Intelli-CRIMP® technology to monitor crimping force
- Automatic Retraction Stop to aid in time and battery savings



EK1240CLX



EK1240KLX

SPECIFICATIONS

- Crimping Force: 12 Tons (106kN)
- Length: 16-1/4" (80mm)
- Width: 3-1/8" (413mm)
- Height: 13-1/2" (343mm)
- Weight: 15 lbs (6.8kg)

CAPACITY

- 8 AWG – 750 kcmil Cu & Al lugs and splices

ERGONOMICS

- Single trigger activation reduces repetitive motion injuries
- 350° head rotation enhances adjustability and reduces user effort

EK1240CLX

CAT. NO.	UPC NO.	DESCRIPTION
EK1240CLX11	61034	Crimper PVC, 12T Li-ion, STD, 120V
EK1240CLX12	61035	Crimper PVC, 12T Li-ion, STD, 12V
EK1240CLX22	61036	Crimper PVC, 12T Li-ion, STD, 230V
EK1240CLX120	61037	Crimper PVC, 12T Li-ion, STD, 120V AC
EK1240CLX230	61038	Crimper PVC, 12T Li-ion, STD, 230V AC
EK1240CLXB	61039	Crimper PVC, 12T Li-ion, STD Bare

EK1240KLX

CAT. NO.	UPC NO.	DESCRIPTION
EK1240KLX11	61046	Crimper Kearney, 12T Li-ion, STD, 120V
EK1240KLX12	61047	Crimper Kearney, 12T Li-ion, STD, 12V
EK1240KLX22	61048	Crimper Kearney, 12T Li-ion, STD, 230V
EK1240KLX120	61049	Crimper Kearney, 12T Li-ion, STD, 120V AC
EK1240KLX230	61050	Crimper Kearney, 12T Li-ion, STD, 230V AC
EK1240KLXB	61051	Crimper Kearney, 12TLi-ion, STD Bare

ACCESSORIES

CAT. NO.	UPC NO.	DESCRIPTION
05167	05167	18V 4.0Ah Li-ion Battery
52178	52178	120V Li-ion Battery Charger
52179	52179	230V Li-ion Battery Charger
52180	52180	12V Li-ion Battery Charger
10118	10118	Carrying Case
12274	12274	Carrying Strap



Crimping Dies for 12 Ton Tools

Crimping dies on page 19



15 TON PISTOL TYPE CRIMPERS

EK1550LX, EK1550FLX



EK1550FLX



EK1550LX

SPECIFICATIONS

- Crimping Force: 15 Tons (135kN)
- Length: 18-1/2" (470mm)
- Width: 3-1/8" (80mm)
- Height: 13-1/2" (343mm)
- Weight: 16.3 lbs (7.4kg)

CAPACITY

- 8 AWG –1550 kcmil Cu lugs and splices
- 8 AWG –1250 kcmil Al lugs and splices

ERGONOMICS

- Handle angle supports decreased wrist deviation and increased grip strength
- Second handle allows for optimal weight distribution

- Forward handle pistol design provides optimal center of gravity
- C-Head configuration
- Assist handle provides additional support
- Equipped with Intelli-CRIMP® technology to monitor crimping force
- Automatic Retraction Stop to aid in time and battery savings
- Utilizes Kearney PH4/P14 dies (EK1550LX)
- Flip-top configuration, reduction in deflection, with improved crimp consistency (EK1550FLX)
- Quick-release locking pin (EK1550FLX)
- Utilizes "P" and "U" style crimping dies (EK1550FLX)

EK1550LX

CAT. NO.	UPC NO.	DESCRIPTION
EK1550LX11	61070	Crimper, 15T Li-ion, STD,120V
EK1550LX12	61071	Crimper, 15T Li-ion, STD, 12V
EK1550LX22	61072	Crimper, 15T Li-ion, STD, 230V
EK1550LX120	60973	Crimper, 15T Li-ion, STD, 120V AC
EK1550LX230	60974	Crimper, 15T Li-ion, STD, 230V AC
EK1550LXB	60975	Crimper, 15T Li-ion, STD, Bare

EK1550FLX

CAT. NO.	UPC NO.	DESCRIPTION
EK1550FLX11	61058	Crimper Flip T, 15T Li-ion, STD, 120V
EK1550FLX2	61059	Crimper Flip T, 15T Li-ion, STD,12V
EK1550FLX22	61060	Crimper Flip T, 15T Li-ion, STD, 230V
EK1550FLX120	61061	Crimper Flip T, 15T Li-ion, STD, 120V AC
EK1550FLX230	61062	Crimper Flip T, 15T Li-ion, STD, 230V AC
EK1550FLXB	61063	Crimper Flip T, 15T Li-ion, STD, Bare

ACCESSORIES

CAT. NO.	UPC NO.	DESCRIPTION
05167	05167	18V 4.0Ah Li-ion Battery
52178	52178	120V Li-ion Battery Charger
52179	52179	230V Li-ion Battery Charger
52180	52180	12V Li-ion Battery Charger
10118	10118	Carrying Case
12274	12274	Carrying Strap
23492	23492	Handle
UA15T	00260	Die Adapters - Greenlee® "U" style dies, Burndy® "U" style dies, ILSCO® ILD style dies, T&B® 15500 style dies, Blackburn® 15500 style dies
48820	48820	Die Adapters - Burndy® P dies (Y46), ILSCO® ILD-P dies
48788	48788	Die Adapters - T&B® 15600 dies, Blackburn® 15600 dies
48802	48802	Die Adapters - Greenlee® 12-Ton dies, Burndy® 12-Ton dies, ILSCO® ILD dies, T&B® 15500 dies, Blackburn® 15500 dies
48824	48824	Die Adapters - Kearney PH2/WH2



Blackburn® and T&B® are registered trademarks of Asea Brown Boveri Ltd.
 Burndy® is a registered trademark of Hubbell Inc.
 ILSCO® is a registered trademark of ILSCO® Corporation.

CRIMPING DIES



KC4 DIES FOR SERVICE ENTRANCE CONNECTORS

CAT. NO.	UPC NO.	DESCRIPTION
KD4-10	02021	Crimping Dies for 5/8" Service Entrance Connectors
KD4-840	02022	Crimping Dies for 840 Service Entrance Connectors
24163	24163	Blank Crimping Dies

4-TON CRIMPING DIE KIT*

CAT. NO.	UPC NO.	DESCRIPTION
KC4CU	02037	Complete Die Set for copper connectors. Includes dies for 8 AWG to 300 kcmil (MCM) copper connectors. (Dies can be stored in tool carrying case.)
KA4AL	12237	Complete die set for aluminum connectors. Includes dies for 8 AWG through 2/0 AWG. (Dies can be stored in tool carrying case.)

DIES FOR CRIMPING COLOR-CODED COPPER & ALUMINUM LUGS & SPLICES

CABLE SIZE	ALUMINUM			COPPER		
	CAT. NO.	UPC NO.	COLOR	CAT. NO.	UPC NO.	COLOR
8 AWG	KA4-8	12222	BLUE	KC4-8	02075	RED
6 AWG	KA4-6	12223	GRAY	KC4-6	02076	BLUE
4 AWG	KA4-4	12225	GREEN	KC4-4	02077	GRAY
2 AWG	KA4-2	12226	PINK	KC4-2	02078	BROWN
1 AWG	KA4-1	12227	GOLD	KC4-1	02079	GREEN
1/0 AWG	KA4-1/0	12228	TAN	KC4-1/0	02080	PINK
2/0 AWG	KA4-2/0	12229	OLIVE	KC4-2/0	02081	BLACK
3/0 AWG	-	-		KC4-3/0	02082	ORANGE
4/0 AWG	-	-		KC4-4/0	02083	PURPLE
250 KCMIL (MCM)	-	-		KC4-250	02084	YELLOW
300 KCMIL (MCM)	-	-		KC4-300	10988	WHITE

*Note: Connections are UL and cUL classified for copper and aluminum when used with Anderson®, Blackburn®, FCI Burndy®, ILSCO®, Panduit®, Thomas & Betts® and Penn-Union® Color-Coded Lugs and Splices.

For Use With:



EK410LX
page 12



Anderson® and Burndy® are registered trademarks of Hubbell Inc.
Panduit® is a registered trademark of Panduit® Corp.
Blackburn® and Thomas & Betts® are registered trademarks of Asea Brown Boveri Ltd.
Penn-Union® is a registered trademark of Penn-Union®.
ILSCO® is a registered trademark of ILSCO® Corporation.

6 TON CRIMPING DIE COMPATIBILITY



6 TON CRIMPING DIE KIT*

CAT. NO.	UPC NO.	DESCRIPTION
K22S1GL	03078	Die Kit for 8 AWG to 600 kcmil Copper Connectors – Includes all copper die sets listed below and carrying case
KD06AL	01631	Die Kit for 8 AWG to 350 kcmil Aluminum Connectors – Includes all aluminum die sets listed below and carrying case

“W” STYLE DIES

CAT. NO.	UPC NO.	BURNDY NO.	CAT. NO.	UPC NO.	BURNDY NO.
KD6-10	10165	W-BG	KD6-18	10173	W-166
KD6-11	10166	W-0	KD6-19	10174	W-243
KD6-12	10167	W-C	KD6-20	10175	W-247
KD6-13	10168	W-K840	KD6-21	10176	W-249
KD6-14	10169	W-161	KD6-22	10177	W-164
KD6-15	10170	W-162	KD6-24	10179	W-237
KD6-16	10171	W-163	KD6-25	10180	W-239
KD6-17	10172	W-165	KD6-27	10182	W-28K



FOR USE WITH:



EK425LX
page 10

Dies for use with service entrance connectors, c-taps, h-taps, overhead and underground connectors

Dies for Crimping Color-Coded Copper & Aluminum Lugs & Splices

22 SERIES CRIMPING DIES

ALUMINUM			COPPER			
CABLE SIZE	CAT. NO.	UPC NO.	COLOR	CAT. NO.	UPC NO.	COLOR
8 AWG	KA22-8	06744	BLUE	KC22-8	03079	RED
6 AWG	KA22-6	06745	GRAY	KC22-6	03080	BLUE
4 AWG	KA22-4	06746	GREEN	KC22-4	03081	GRAY
2 AWG	KA22-2	06747	PINK	KC22-2	03082	BROWN
1 AWG	KA22-1	06749	GOLD	KC22-1	03083	GREEN
1/0 AWG	KA22-1/0	06750	TAN	KC22-1/0	03084	PINK
2/0 AWG	KA22-2/0	06751	OLIVE	KC22-2/0	03085	BLACK
3/0 AWG	KA22-3/0	06752	RUBY	KC22-3/0	03086	ORANGE
4/0 AWG	KA22-4/0	06753	WHITE	KC22-4/0	03087	PURPLE
250 KCMIL (MCM)	KA22-250	06754	RED	KC22-250	03088	YELLOW
300 KCMIL (MCM)	KA22-300	06755	BLUE	KC22-300	03089	WHITE
350 KCMIL (MCM)	KA22-350	06756	BROWN	KC22-350	03090	RED
400 KCMIL (MCM)	-	-	-	KC22-400	03091	BLUE
500 KCMIL (MCM)	-	-	-	KC22-500	03092	BROWN
600 KCMIL (MCM)	-	-	-	KC22-600	03094	GREEN

*Note: Connections are UL and cUL classified for copper and aluminum, when used with Sherman + Reilly™ tools on Anderson®, Blackburn®, FCI Burndy®, ILSCO®, Panduit®, Thomas & Betts® and Penn-Union® Color-Coded Lugs and Splices.

FOR USE WITH:



EK622LX
page 13



EK622PLX
page 13

12 TON CRIMPING DIE COMPATIBILITY



12-TON CRIMPING KITS

"U" STYLE DIE KITS

CAT. NO.	UPC NO.	DESCRIPTION
KD12CU	10260	Die Kit for 6 AWG to 750 kcmil Copper Connectors – Includes all copper die sets below except KC12-8
KD12AL	10261	Die Kit for 6 AWG to 750 kcmil Aluminum Connectors – Includes all aluminum die sets below except 35776

ADDITIONAL "U" STYLE DIES

CAT. NO.	UPC NO.	BURNDY NO.	CAT. NO.	UPC NO.	BURNDY NO.
KD12-10	10188	U-BG	KD12-30	10200	U-D3
KD12-11	10189	U-0	KD12-32	10202	U-F
KD12-12	10190	U-C	KD12-33	10203	U-997
KD12-14	10192	U-161	KD12-35	10205	U-238
KD12-15	10193	U-162	KD12-36	10206	U-654
KD12-17	10195	U-165	KD12-37	10207	U-655
KD12-18	10196	U-166	KD12-38	10208	U-658
KD12-19	10197	U-243	KD12-39	10209	U-659
KD12-20	10198	U-247	KD12-40	10210	U-998
KD12-21	10199	U-249	-	-	-



Dies for Crimping Color-Coded Copper & Aluminum Lugs & Splices

"U" STYLE DIES

ALUMINUM			COPPER			
CABLE SIZE	CAT. NO.	UPC NO.	COLOR	CAT. NO.	UPC NO.	COLOR
8 AWG	KA12-8	22084	BLUE	KC12-8	10996	GRAY
6 AWG	KA12-6	22085	GRAY	KC12-6	10997	BLUE
4 AWG	KA12-4	22086	GREEN	KC12-4	10998	GRAY
2 AWG	KA12-2	22087	PINK	KC12-2	10999	BROWN
1 AWG	KA12-1	22088	GOLD	KC12-1	11003	GREEN
1/0 AWG	KA12-1/0	22089	TAN	KC12-1/0	11004	PINK
2/0 AWG	KA12-2/0	22090	OLIVE	KC12-2/0	11007	BLACK
3/0 AWG	KA12-3/0	22121	RUBY	KC12-3/0	11010	ORANGE
4/0 AWG	KA12-4/0	22122	WHITE	KC12-4/0	11011	PURPLE
250 KCMIL (MCM)	KA12-250	22123	RED	KC12-250	11012	YELLOW
300 KCMIL (MCM)	KA12-300	22124	BLUE	KC12-300	11013	WHITE
350 KCMIL (MCM)	KA12-350	22125	BROWN	KC12-350	11014	RED
400 KCMIL (MCM)	KA12-400	22126	GREEN	KC12-400	11015	BLUE
500 KCMIL (MCM)	KA12-500	22127	PINK	KC12-500	11016	BROWN
600 KCMIL (MCM)	KA12-600	22128	BLACK	KC12-600	11018	GREEN
750 KCMIL (MCM)	KA12-750	22129	YELLOW	KC12-750	11020	BLACK

* Connections are UL and cUL classified for copper connectors when used with Sherman + Reilly™ tools on Anderson®, Blackburn®, FCI Burndy®, ILSCO®, Panduit®, Thomas & Betts® and Penn-Union® Color-Coded Lugs and Splices.

** Connections are UL and cUL classified for aluminum connectors when used with Sherman + Reilly™ tools on Anderson®, Blackburn®, FCI Burndy®, ILSCO®, Panduit®, Thomas & Betts® and Penn-Union® Color-Coded Lugs and Splices.

FOR USE WITH:



EK1240LX
page 14



RK1240
page 24



EK1550FLX
page 16

6 AND 12 TON CCX MULTI-TOOLS

E12CCXLX, E6CCXLX

- Intelli-CRIMP® technology includes a pressure sensor that monitors the crimping force of each crimp and provides the operator with a visual and audible alert if the force is below specifications
- Retraction Stop Repeat (RSR) allows the operator to partially retract the ram and then the tool repeats the retraction for subsequent crimps
- Two-stage hydraulic system provides fast advance and power speeds, saving time
- Forward handle position improves tool balance
- Crimping head rotates 350°
- Use optional CCX blades and adapters (see page 26)
- U.S. Patent #6,206,663, #6,532,790



E12CCXLX



E6CCXLX

E6CCXLX

CAT. NO.	UPC NO.	DESCRIPTION
E6CCXLX11	61158	Multi Tool, 6T Li-ion, STD, 120V
E6CCXLX12	61159	Multi Tool, 6T Li-ion, STD, 12V
E6CCXLX22	00001	Multi Tool, 6T Li-ion, STD, 230V
E6CCXLX120	61161	Multi Tool, 6T Li-ion, STD, 120V AC
E6CCXLX230	61162	Multi Tool, 6T Li-ion, STD, 230V AC
E6CCXLXB	61163	Multi Tool, 6T Li-ion, STD, Bare

EC12CCXLX

CAT. NO.	UPC NO.	DESCRIPTION
E12CCXLX11	61146	Multi Tool, 12T Li-ion, STD, 120V
E12CCXLX12	61147	Multi Tool, 12T Li-ion, STD, 12V
E12CCXLX22	61148	Multi Tool, 12T Li-ion, STD, 230V
E12CCXLX120	61149	Multi Tool, 12T Li-ion, STD, 120V AC
E12CCXLX230	61150	Multi Tool, 12T Li-ion, STD, 230V AC
E12CCXLXB	61151	Multi Tool, 12T Li-ion, STD, Bare

SPECIFICATIONS

- Crimping Force: E12CCXLX – 24,000 lbs (107kN) 12 Ton, E6CCXLX – 12,000 lbs (53kN) 6 Ton
- Length: E12CCXLX – 16-1/2" (419mm) E6CCXLX – 15-1/2" (394mm)
- Weight: E12CCXLX – 15 lbs (6.8kg) E6CCXLX – 14 lbs (6.3kg)
- Battery: E12CCXLX – 18V 4.0Ah Li-ion E6CCXLX – 18V 4.0Ah Li-ion
- Battery Charge Time: E12CCXLX – 25 minutes E6CCXLX – 40 minutes

ACCESSORIES

CAT. NO.	UPC NO.	DESCRIPTION
05167	05167	18V 4.0Ah Li-ion Battery
52178	52178	120V Li-ion Battery Charger
52179	52179	230V Li-ion Battery Charger
52180	52180	12V Li-ion Battery Charger
10122	10122	Carrying Case
12274	12274	Carrying Strap



Crimping Dies for 6 Ton Tools

Crimping dies on page 18



Crimping Dies for 12 Ton Tools

Crimping dies on page 19

6 TON IN-LINE CRIMPER

EK6IDLX



EK6IDLX

- Lightest indenting tool on the market; ideal for tight spaces
- Tool marking – provides clear marking of crimped connectors
- Intelli-CRIMP® technology measures pressure and amperage 32 times a second
- Two-stage telescopic design identifies correct pressure to apply
- Flip-top style uses a pull pin to open head for easy removal from the connector
- Single trigger operation for controlling all tool functions
- Broad crimp range – standard in-line stranded wire classes

SPECIFICATIONS

- Crimping Force: Variable 6 Ton (30-60kN)
- Head Rotation: 350°
- Weight with Battery: 5.5 lbs (2.5kg)
- Height: 15" (380mm)

APPROVED WIRE CLASSES

- Standard Strand Wire Classes - B; C Copper: #8 – 500 kcmil (MCM)
- Aluminum: 1/0 – 350 kcmil (MCM)
- Fine Strand – Copper Wire Classes – G; H; I; K; M: 1/0 - 350 kcmil (MCM)
- DLO – Copper Locomotive: #8 – 373.7 kcmil (MCM)

Note: Please contact Greenlee Customer Service for specific wire class certifications.

DIELESS



DIELESS

EK6IDLX

CAT. NO.	UPC NO.	DESCRIPTION
52177	52177	18V 2.0Ah Li-Ion Battery
EK6IDLX11	61079	Crimper Indent, 6T Li-ion, STD, 120V
EK6IDLX12	61098	Crimper Indent, 6T Li-ion, STD, 12V
EK6IDLX22	61099	Crimper Indent, 6T Li-ion, STD, 230V
EK6IDLX120	61100	Crimper Indent, 6T Li-ion, STD, 120V AC
EK6IDLX230	61073	Crimper Indent, 6T Li-ion, STD, 230V AC
EK6IDLXB	61074	Crimper Indent, 6T Li-ion, STD, Bare

6 TON PISTOL STYLE CRIMPERS

EK6ATLX, EK6FTLX

SPECIFICATIONS

- Crimping Force: 12,400 lbs (55kN)
- Length: EK6ATLX – 14" (355mm)
EK6FTLX – 14-7/8" (378mm)
- Weight: EK6ATLX – 12 lbs (5.4kg)
EK6FTLX – 11 lbs (5kg)
- Battery: 18V 4.0Ah Li-ion
- Battery Charge Time: 25 minutes



- Intelli-CRIMP® technology includes a pressure sensor that monitors the crimping force of each crimp and provides the operator with a visual and audible alert if the force is below specifications
- Automatic Retraction Stop (ARS) retracts the ram just enough to get ready for the next cycle saving time and energy
- The two-stage hydraulic system provides fast advance and power speeds which saves time
- Forward handle position improves tool balance
- Crimping head rotates 350°
- Flip-top style uses a pull pin to open head for easy removal from the connector
- U.S. Patents #6,206,663 and #6,065,326

EK6ATLX

CAT. NO.	UPC NO.	DESCRIPTION
EK6ATLX11	61107	Crimper Quad, 6T Li-ion, STD, 120V
EK6ATLX12	61108	Crimper Quad, 6T Li-ion, STD, 12V
EK6ATLX22	61109	Crimper Quad, 6T Li-ion, STD, 230V
EK6ATLX120	61110	Crimper Quad, 6T Li-ion, STD, 120V AC
EK6ATLX230	61111	Crimper Quad, 6T Li-ion, STD, 230V AC
EK6ATLXB	61112	Crimper Quad, 6T Li-ion, STD, Bare

EK6FTLX

CAT. NO.	UPC NO.	DESCRIPTION
EK6FTLX11	61119	Crimper Quad Flip, 6T Li-ion, STD, 120V
EK6FTLX12	61120	Crimper Quad Flip, 6T Li-ion, STD, 12V
EK6FTLX22	61121	Crimper Quad Flip, 6T Li-ion, STD, 230V
EK6FTLX120	61122	Crimper Quad Flip, 6T Li-ion, STD, 120V AC
EK6FTLX230	61123	Crimper Quad Flip, 6T Li-ion, STD, 230V AC
EK6FTLXB	61124	Crimper Quad Flip, 6T Li-ion, STD, Bare

ACCESSORIES

CAT. NO.	UPC NO.	DESCRIPTION
05167	05167	18V 4.0Ah Li-Ion Battery
52178	52178	120V Li-ion Battery Charger
52179	52179	230V Li-ion Battery Charger
52180	52180	12V Li-ion Battery Charger
10118	10118	Carrying Case
12274	12274	Carrying Strap



DIELESS

12 TON PISTOL STYLE CRIMPER

EK12IDLX



EK12IDLX

SPECIFICATIONS

- Crimping Force: 24,000 lbs (106kN)
- Length: 16 1/2" (420mm)
- Weight: 15 lbs (6.8kg)
- Height: 14 1/2" (368mm)
- Battery: 18V 4.0Ah Li-ion
- Battery Charge Time: 40 minutes

CAPACITY

- Copper Color Coded Lugs and Splices:
4 AWG to 1000 kcmil
- Aluminum Color Coded Lugs and Splices:
6 AWG to 1000 kcmil

- Intelli-CRIMP® technology includes a pressure sensor that monitors the crimping force of each crimp and provides the operator with a visual and audible alert if the force is below specifications
- Automatic Retraction Stop (ARS) retracts the ram just enough to get ready for the next cycle, saving time and energy
- Two-stage hydraulic system provides fast advance and power speeds, saving time
- Forward handle position improves tool balance
- Crimping head rotates 350°
- Flip open crimping head will allow crimping of 4 AWG – 1000 kcmil copper or 6 AWG – 1000 kcmil aluminum with no dies to change

EK12IDLX

CAT. NO.	UPC NO.	DESCRIPTION
EK12IDLX11	61134	Crimper Indent, 12T Li-ion, STD, 120V
EK12IDLX12	61135	Crimper Indent, 12T Li-ion, STD, 12V
EK12IDLX22	61136	Crimper Indent, 12T Li-ion, STD, 230V
EK12IDLX120	61137	Crimper Indent, 12T Li-ion, STD, 120V AC
EK12IDLX230	61138	Crimper Indent, 12T Li-ion, STD, 230V AC
EK12IDLXB	61139	Crimper Indent, 12T Li-ion, STD, Bare

ACCESSORIES

CAT. NO.	UPC NO.	DESCRIPTION
05167	05167	18V 4.0Ah Li-Ion Battery
52178	52178	120V Li-ion Battery Charger
52179	52179	230V Li-ion Battery Charger
52180	52180	12V Li-ion Battery Charger
KK50LGL	25752	Carrying Case (EK6IDLX)
10118	10118	Carrying Case (EK12IDLX)
12274	12274	Carrying Strap



DIELESS

CRIMPING REMOTES

RK1240, RK1240C

SPECIFICATIONS

- Crimping Force: 24,000 lbs (106kN)
- Length: 11-7/8" (302mm)
- Weight: RK1240 – 9.7 lbs (4.4kg)
- Max. Operating Pressure: 10,000 PSI (700 bar)

CAPACITY

- 8 AWG – 750 kcmil Copper Color-Coded Lugs and Splices

RK12ID

SPECIFICATIONS

- Crimping Force: 24,000 lbs (106kN)
- Length: 13" (330mm)
- Width: 3.75" (95mm)
- Weight: 9.75 lbs (4.42kg)

CAPACITY

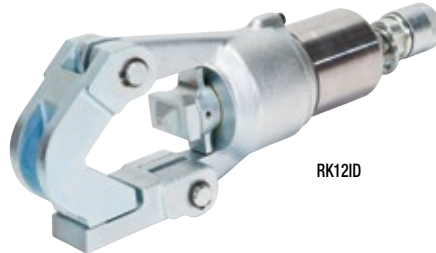
- 4 AWG – 1000 kcmil copper or 6 AWG kcmil aluminum and no dies to change



RK1240



RK1240C



RK12ID

10,000 PSI HIGH PRESSURE



13868



130878



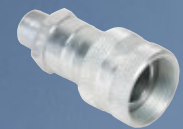
54169



F02461 or F24631



F022061



F021627

CAT. NO.	UPC NO.	DESCRIPTION
54169	54169	Coupler-Half 1/4" Male Nipple
130868	40647	Coupler-HYD Parker #3010-2-542 Male
130878	40652	Coupler-HYD Female 1/4-18 NPSM
F021627	41877	Coupler, Female 3/8-18 NPTM
F022061	41941	Coupler-HYD Male 3/8-18 NPTF
F024631	42096	Coupler, Female 1/4-18 NPTM
RK1240	05351	Crimping Tool SA 12T 42mm (RK1240)
RK1240C	07205	Crimping Tool Assembly, 42mm-PVC COV
RK12ID	01565	Crimping Tool, Dieless Remote



HIGH PRESSURE HOSES



NC-6-38MF
NC-10-38MF
NC-30-38MF

- Comes pre-charged in 6', 10', and 33' lengths
- Standard 3/8" NPT screw type male and female fittings installed
- High pressure - up to 10,000 PSI
- Certified non-conductive
- Double rubber cap comes standard to protect fittings while not in use

CRIMPING REMOTES

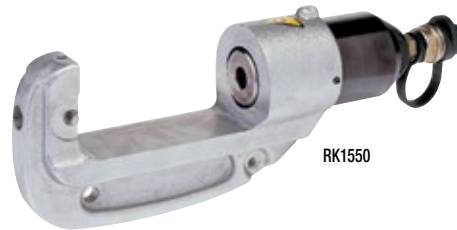
RK1550

SPECIFICATIONS

- Crimping Force at 10,000 PSI (700 bar): 30,000 lbs (133kN)
- Length: 15" (380mm)
- Width: 3" (76mm)
- Height: 5-3/8" (135mm)
- Weight: 14.1 lbs (6.4kg)
- Operating Pressure: 10,000 PSI (700 bar)

CAPACITY

- Copper Color-Coded Lugs and Splices: #8 to 1500 kcmil (MCM) Aluminum Color-Coded Lugs and Splices: #8 to 1000 kcmil (MCM)



RK1550

RK1550FT

SPECIFICATIONS

- Crimping Force at 10,000 PSI (700 bar): 30,000 lbs (135kN)
- Length: 13.75" (349mm)
- Width: 3" (76mm)
- Height: 5" (127mm)
- Weight: 11.4 lbs (5.2kg)
- Operating Pressure: 10,000 PSI (700 bar)

CAPACITY

- Copper Color-Coded Lugs and Splices: #8 to 1500 kcmil (MCM) Color-Coded Lugs and Splices: #8 to 1250 kcmil (MCM)



RK1550FT

CAT. NO.	UPC NO.	DESCRIPTION
NC-10-38MF	02410	Hose, HYD, 3/8 Male/Female (10')
NC-30-38MF	02411	Hose, HYDC, 3/8 Male/Female (10m)
NC-6-38MF	02407	Hose, HYD, 3/8 Male/Female (6')
RK121D	01565	Crimping Tool, Dieless Remote
RK1550FT	00552	Crimping Tool, SA 15T Flip-Top
RK6040	10604	Crimper, 60 Ton

CCX TOOL ACCESSORIES

(OPTIONAL, ALL IN PAIRS EXCEPT PUNCH DRIVER)

DIE ADAPTERS

CAT. NO.	UPC NO.	DESCRIPTION	E6CCXLX	E12CCXLX
UA22	07062	Adapter for Greenlee® K22 dies		
UAK	07033	Adapter for Kearney "O", T&B "6 Ton", and Blackburn® "OD" dies		
UAW	07035	Adapter for Burndy® "W" and Panduit® "CD-2001" dies (equivalent to "D3" die)		
UA12T	20158	Adapter for "U" dies (included with E12CCXL tool)		

CABLE CUTTING BLADES

CAT. NO.	UPC NO.	DESCRIPTION	E6CCXLX	E12CCXLX
UC26	06714	Cutter blades AL & CU 1" capacity		
UC40	07036	Cutter blades AL & CU 1-1/2" capacity		
UCACSR	07037	Cutter blades for ACSR & guy strand		

THREADED ROD CUTTING BLADES

CAT. NO.	UPC NO.	DESCRIPTION	E6CCXLX	E12CCXLX
UCUNC14	07038	Cutter blades for 1/4" threaded rod		
UCUNC38	07039	Cutter blades for 3/8" threaded rod		
UCUNC12	07274	Cutter blades for 1/2" threaded rod		

KNOCKOUT PUNCH ADAPTER

CAT. NO.	UPC NO.	DESCRIPTION	E6CCXLX	E12CCXLX
UA12P	11890	Punch Driver Adapter (accepts 3/4" draw stud)		

DIELESS CRIMP ADAPTER

CAT. NO.	UPC NO.	DESCRIPTION	E6CCXLX	E12CCXLX
UA12ID	00803	Dieless Crimp Adapter		



UA22



UAK



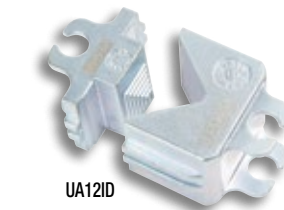
UC40



UCUNC38



UA12P



UA12ID

PUMP

10K PSI PUMP

EHP700L



18V
Lithium-Ion

Intelli-CRIMP
INTELLIGENT CRIMPING SYSTEM

RSR



EHP700L

EHP700L

CAT. NO.	UPC NO.	DESCRIPTION
EHP700L11	00735	Power Pump, Li-ion, STD, 120V
EHP700L12	00764	Power Pump, Li-ion, STD, 12V
EHP700L22	00765	Power Pump, Li-ion, STD, 230V
EHP700L120	00766	Power Pump, Li-ion, STD, 120V AC
EHP700L230	00767	Power Pump, Li-ion, STD, 230V AC
EHP700LB	01151	Power Pump, Li-ion, STD, Bare

GATOR-PK

CAT. NO.	UPC NO.	DESCRIPTION
GATOR-PK	02274	Utility Backpack

ACCESSORIES

CAT. NO.	UPC NO.	DESCRIPTION
52176	52176	18V 3.0Ah Li-ion Battery
52178	52178	120V Li-ion Battery Charger
52179	52179	230V Li-ion Battery Charger
52180	52180	12V Li-ion Battery Charger
TG3	01054	Strap
25766	25766	Adapter, Charger 18V Li-ion to 12V Ni
EAC18120	52191	Adapter, AC - 120V to 18V
EAC18230	52192	Adapter, AC - 230V to 18V
HTA4GL	00759	Remote Control
EL122/32	02042	Hydraulic Fluid, Biodegradable
17707	17707	Hose Assembly, 1/4" X 10' 3/8M & 1/4M Filled
05850	05850	Hose Assembly, 1/4" X 10' 3/8M & 3/8F Filled
01058	01058	Hose Assembly, 1/4" X 6' 3/8M & 1/4M Filled
01059	01059	Hose Assembly, 1/4" X 6' 3/8M & 3/8F Filled

- Capable of powering any PSI remote head
- Equipped with Intelli-CRIMP® technology to monitor crimping force
- Retraction Stop Repeat (RSR) allows users to teach pump where to start and stop each cycle
- Real-time LED readout permits user to visually monitor pressure cycle
- Job specific crimp, cut, and punch settings
- Mode dial allows for pump to learn new operating cycles
- Dual battery ports – 1 active/1 stored

SPECIFICATIONS

- Length: 14" (356mm)
- Width: 6-1/2" (165mm)
- Height: 11-1/2" (292mm)
- Weight: 14.1 lbs (6.4kg)
- Operating Pressure: 10,000 PSI (700 bar)



GATOR-PK

SPECIFICATIONS

- Top: 15" x 10" x 9" (1350 in³)
- Front: 15" x 8" x 4" (480 in³)
- Sides: 8" x 5" x 2" (80 in³)
- Hi-Vis vinyl material
- Triple reinforced hang tab (SWL = 125 lbs)
- Water resistant
- Three adjustment straps for comfort
- Three internal compartments for safe and secure transport
- Three external pouches for batteries, gloves, and accessories

GREENLEE GATOR® CUTTING TOOLS

Utilize a combination of industry leading ergonomic design and operational precision for greater operator comfort

- Hardened blades designed for cutting a variety of materials
- Precise electronic motor brake eliminates residual travel
- Tools that are easier to operate allow the user to be more productive and get the job done **faster, safer, and easier®**



CUTTING

IN-LINE CABLE CUTTERS

ES32LX, ES32FLX

- Small size make the ES32LX and ES32FLX an excellent tool for use inside panel boxes
- In line tool style is lightweight and easy to control
- Tools automatically retract when the cutting cycle is complete
- Designed to cut soft metals (copper/aluminum)
- Scissor style cutter for standard cable
- Hardened blades for increased durability

SPECIFICATIONS

- Height: 15-1/2" (394mm)
- Width: 2-7/8" (73mm)
- Weight: 5 lbs (2.2kg)

CAPACITY

- 500 kcmil (240mm²) Cu or Al cable

ERGONOMICS

- Maneuverability and reduced weight provide improved working postures
- In-line trigger strengthens grip biomechanics



ES32LX



ES32LX

CAT. NO.	UPC NO.	DESCRIPTION
ES32LX11	61194	Cable Cutter, Li-ion, 32mm, 120V
ES32LX12	61195	Cable Cutter, Li-ion, 32mm, 12V
ES32LX22	61196	Cable Cutter, Li-ion, 32mm, 230V
ES32LX120	61197	Cable Cutter, Li-ion, 32mm, 120V AC
ES32LX230	61198	Cable Cutter, Li-ion, 32mm, 230V AC
ES32LXB	61199	Cable Cutter, Li-ion, 32mm, Bare

ES32FLX

CAT. NO.	UPC NO.	DESCRIPTION
ES32FLX11	61206	Cable Cutter Fine, Li-ion, 32mm, 120V
ES32FLX12	61207	Cable Cutter Fine, Li-ion, 32mm, 12V
ES32FLX22	61208	Cable Cutter Fine, Li-ion, 32mm, 230V
ES32FLX120	61209	Cable Cutter Fine, Li-ion, 32mm, 120V AC
ES32FLX230	61210	Cable Cutter Fine, Li-ion, 32mm, 230V AC
ES32FLXB	61211	Cable Cutter Fine, Li-ion, 32mm, Bare

ACCESSORIES

CAT. NO.	UPC NO.	DESCRIPTION
52177	52177	18V 2.0Ah Li-ion Battery
52178	52178	120V Li-ion Battery Charger
52179	52179	230V Li-ion Battery Charger
52180	52180	12V Li-ion Battery Charger
25752	25752	Carrying Case
12092	12092	Movable Blade
12093	12093	Fixed Blade



IN-LINE CABLE CUTTER

ESC35LX

TOOL FUNCTIONS

- Cutting head rotates 350°
- Tool automatically retracts when the cutting cycle is complete
- Overmolded tacky grip area make gripping the tool easier and more comfortable

CAPACITY

- 1000 kcmil (500mm²) Copper Or Aluminum Cable

ERGONOMICS

- In-line tool style is lightweight and very easy to control
- One trigger controls all tool features



ESC35LX

- Equipped with Bluetooth® Communication enabled via the Gator Eye® app
- Features LED display screen communicating pressure and battery levels for a real-time tool diagnostics and feedback
- State-of-the-art 18V lithium ion (Li-ion) battery provides 70% more cycles per charge and faster cycle times
- LED light provides the operator with the battery charge and tool maintenance status
- LED work light illuminates dark work areas
- Gator® battery-powered tools now use bio-degradable oil
- Smart chargers control the charging current, charging voltage and battery temperature to maximize battery life
- Available with 120V, 12V or 230V battery charger or with 120V or 230V corded adapter in place of batteries and charger



ESC35LX

CAT. NO.	UPC NO.	DESCRIPTION
ESC35LX11	61335	Cable Cutter, Li-ion, 35mm STD, 120V
ESC35LX12	61336	Cable Cutter, Li-ion, 35mm STD, 12V
ESC35LX22	61337	Cable Cutter, Li-ion, 35mm STD, 230V
ESC35LX120	61338	Cable Cutter, Li-ion, 35mm STD, 120V AC
ESC35LX230	61339	Cable Cutter, Li-ion, 35mm STD, 230V AC
ESC35LXB	61340	Cable Cutter, Li-ion, 35mm STD, Bare

ACCESSORIES

CAT. NO.	UPC NO.	DESCRIPTION
05167	05167	18V 4.0Ah Li-ion Battery
52178	52178	120V Li-ion Battery Charger
52179	52179	230V Li-ion Battery Charger
52180	52180	12V Li-ion Battery Charger
25752	25752	Carrying Case

IN-LINE BOLT AND CABLE TRAY CUTTERS

ETS8LX, ETS12LX



ETS8LX

- Designed to cut small diameter soft and hard metal materials
- C-head style cutting design
- Hardened blades for increased longevity
- Designed for cable tray up to 5/16" (ETS8LX)

SPECIFICATIONS

- Weight: 3.3 lbs (1.5kg)
- Length: 12-1/8" (308mm)
- Battery: 18V 2.0Ah Li-ion
- Battery Charge Time: 25 minutes

MATERIAL

Cable Tray (Mild steel, Zinc Plated)
 Cable Tray (Stainless Steel)
 Threaded Rods
 Threaded Rods, Stainless Steel
 Steel Bolts (Grade 2)
 Steel Bolts (Grade 8)

ERGONOMICS

- Maneuverability and reduced weight provide improved working postures
- In-line trigger strengthens grip biomechanics

DIAMETER

1/16"	1/8"	3/16"	1/4"	5/16"

ETS8LX

CAT. NO.	UPC NO.	DESCRIPTION
ETS8LX11	61170	Cable Tray Cutter, Li-ion, 8mm STD, 120V
ETS8LX12	61171	Cable Tray Cutter, Li-ion, 8mm STD, 12V
ETS8LX22	61172	Cable Tray Cutter, Li-ion, 8mm STD, 230V
ETS8LX120	61173	Cable Tray Cutter, Li-ion, 8mm STD, 120V AC
ETS8LX230	61174	Cable Tray Cutter, Li-ion, 8mm STD, 230V AC
ETS8LXB	61175	Cable Tray Cutter, Li-ion, 8mm STD, Bare

ACCESSORIES

CAT. NO.	UPC NO.	DESCRIPTION
52177	52177	18V 2.0Ah Li-ion Battery
52178	52178	120V Li-ion Battery Charger
52179	52179	230V Li-ion Battery Charger
52180w	52180	12V Li-ion Battery Charger
25752	25752	Carrying Case
19987	19987	Blade Set (ETS8LX)
56288	56288	Blade Set (ETS12LX)



ETS12LX

CUTTING CAPACITY

- Common Bolt: 1/2" diameter
- Grade 5 Bolt: 7/16" diameter
- Grade 8 Bolt: 5/16" diameter
- Threaded Rod: 1/2" diameter
- One-Time Disposable Lock: 4 AWG Alumoweld
- Boa Lock: BL-9
- Grade 40 Rebar: 3/8" diameter
- Steel Rod: 3/8" diameter (1/2" diameter using two cycles)
- Ground Rod: 3/8" diameter (1/2" diameter using two cycles)
- Copper and Aluminum Cable: 2/0 AWG
- ACSR: 3/0 AWG Pigeon (4/0 AWG Pigeon using two cycles)
- Guy Strand: 5/16" diameter (3/8" diameter using two cycles)
- EHS Guy Strand: 5/16" diameter
- Aircraft Cable: 1/4" diameter

SPECIFICATIONS

- Height: 13-5/8" (365mm)
- Width: 2-7/8" (73mm)
- Weight: 4.4 lbs (2.0kg)

ETS12LX

CAT. NO.	UPC NO.	DESCRIPTION
ETS12LX11	61182	Bolt Cutter, Li-ion, 12mm STD, 120V
ETS12LX12	61183	Bolt Cutter, Li-ion, 12mm STD, 12V
ETS12LX22	61184	Bolt Cutter, Li-ion, 12mm STD, 220V
ETS12LX120	61185	Bolt Cutter, Li-ion, 12mm STD, 120V AC
ETS12LX230	61186	Bolt Cutter, Li-ion, 12mm STD, 230V AC
ETS12LXB	61187	Bolt Cutter, Li-ion, 12mm STD, Bare



IN-LINE ACSR CUTTERS

ES20LX, ESG25LX



ES20LX

- Designed to cut ACSR, guy strand, and ground rod
- Scissor style head for a cleaner cut
- Equipped with retraction stop to aid in time and battery savings
- Hardened blades for increased longevity



ES20LX

CAT. NO.	UPC NO.	DESCRIPTION
ES20LX11	61218	Wire Cutter, Li-ion, 20mm STD, 120V
ES20LX12	61219	Wire Cutter, Li-ion, 20mm STD, 12V
ES20LX22	61220	Wire Cutter, Li-ion, 20mm STD, 230V
ES20LX120	61221	Wire Cutter, Li-ion, 20mm STD, 120V AC
ES20LX130	61222	Wire Cutter, Li-ion, 20mm STD, 230V AC
ES20LXB	61223	Wire Cutter, Li-ion, 20mm STD, Bare

ACCESSORY

ES20E	05526	Blade Kit
-------	-------	-----------

SPECIFICATIONS

- Height: 15" (381mm)
- Width: 2-7/8" (73mm)
- Weight: 4.6 lbs (2kg)

CAPACITY

- Max Diameter: 3/4" diameter
- ACSR: 336.4 kcmil Merlin
- Standard Guy Strand: 3/8" diameter
- Ground Rod: 3/8" diameter
- Rebar (SCH 60): 3/8" diameter
- Soft Steel Bolts: 3/8" diameter

ERGONOMICS

- Maneuverability and reduced weight provide improved working postures
- In-line trigger strengthens grip biomechanics



ESG25LX

- Designed to cut ACSR, guy strand, and ground rod
- Guillotine style head
- Equipped with retraction stop to aid in time and battery savings
- Hardened blades for increased longevity

SPECIFICATIONS

- Height 15" (381mm)
- Width: 2-7/8" (73mm)
- Weight: 4.6 lbs (2kg)

CAPACITY

- Cutter Head Opening: 1" (25mm)
- ACSR: 636 kcmil
- Guy Strand (not EHS): 5/8" (16mm)
- Ground Rod: 3/8" (9mm)
- Rebar (Schedule 60): 3/8" (9mm)
- Wire Rope: 1/2" (13mm)

ERGONOMICS

- Maneuverability and reduced weight provide improved working postures
- In-line trigger strengthens grip biomechanics



ESG25LX

CAT. NO.	UPC NO.	DESCRIPTION
ESG25LX11	61230	Wire Cutter, Li-ion, 25mm STD, 120V
ESG25LX12	61231	Wire Cutter, Li-ion, 25mm STD, 12V
ESG25LX22	61232	Wire Cutter, Li-ion, 25mm STD, 230V
ESG25LX120	61233	Wire Cutter, Li-ion, 25mm STD, 120V AC
ESG25LX130	61234	Wire Cutter, Li-ion, 25mm STD, 230V AC
ESG25LXB	61235	Wire Cutter, Li-ion, 25mm STD, Bare

ACCESSORY

76807	76807	Blade Kit
-------	-------	-----------

ACSR AND GUY WIRE CUTTERS

ESG55LX, ESG45LX

- Designed to cut the largest ACSR, ground rods, and guy strands
- Guillotine style head
- Equipped with retraction stop to aid in time and battery savings
- Hardened blades for increased longevity



ESG55LX

ESG55LX

CAT. NO.	UPC NO.	DESCRIPTION
ESG55LX11	61299	Wire Cutter, Li-ion, 55mm STD, 120V
ESG55LX12	61300	Wire Cutter, Li-ion, 55mm STD, 12V
ESG55LX22	61301	Wire Cutter, Li-ion, 55mm STD, 230V
ESG55LX120	61302	Wire Cutter, Li-ion, 55mm STD, 120V AC
ESG55LX230	61303	Wire Cutter, Li-ion, 55mm STD, 230V AC
ESG55LXB	61304	Wire Cutter, Li-ion, 55mm STD, Bare



SPECIFICATIONS

- Length: 18-1/8" (460mm)
- Width: 3-1/8" (80mm)
- Height: 13-1/4" (337mm)
- Weight: 17.5 lb. (8kg)

CAPACITY

- Max Diameter: 2-1/8" diameter
- ACSR: Joree 76/19 AWG Std
- Guy Strand: 5/8" diameter
- EHS Guy Strand: 9/16" diameter
- Ground Rod: 3/4" diameter
- Rebar (SCH 60): 5/8" diameter
- Soft Steel Bolts: 3/4" diameter

ERGONOMICS

- Handle angle supports decreased wrist deviation and increased grip strength
- Second handle allows for optimal weight distribution



ESG45LX

- Single trigger activation reduces repetitive motion injuries
- 350° head rotation enhances adjustability and reduces user effort

ESG45LX

CAT. NO.	UPC NO.	DESCRIPTION
ESG45LX11	61287	Wire Cutter, Li-ion, 45mm STD, 120V
ESG45LX12	61288	Wire Cutter, Li-ion, 45mm STD, 12V
ESG45LX22	61289	Wire Cutter, Li-ion, 45mm STD, 230V
ESG45LX120	61290	Wire Cutter, Li-ion, 45mm STD, 120V AC
ESG45LX230	61291	Wire Cutter, Li-ion, 45mm STD, 230V AC
ESG45LXB	61292	Wire Cutter, Li-ion, 45mm STD, Bare

ACCESSORIES

CAT. NO.	UPC NO.	DESCRIPTION
05167	05167	18V 4.0Ah Li-ion Battery
52178	52178	120V Li-ion Battery Charger
52179	52179	230V Li-ion Battery Charger
52180	52180	12V Li-ion Battery Charger
10118	10118	Carrying Case
12274	12274	Carrying Strap

SPECIFICATIONS

- Length: 16-5/8" (423mm)
- Width: 3-1/8" (80mm)
- Height: 13" (330mm)
- Weight: 13 lbs (5.9kg)

CAPACITY

- ACSR: 1590 kcmil (MCM), (Falcon 54/19)
- Standard Guy Strand: 5/8" diameter (16mm)
- EHS Guy Strand: 1/2" diameter (13mm)
- Ground Rod: 5/8" diameter (16mm)
- Rebar (schedule 60): 1/2" diameter (13mm)
- Wire Rope: 5/8" diameter (16mm)
- Copper and Aluminum

PISTOL STYLE CABLE CUTTERS

ESG50LX, ESC85LX

SPECIFICATIONS

- Length: 23-3/4" (604mm)
- Width: 3-1/8" (80mm)
- Height: 13" (330mm)
- Weight: 22 lbs (9.9kg)

CAPACITY

- 4" diameter (105mm) Communications, Cu & Al Power Cables

ERGONOMICS

- Handle angle supports decreased wrist deviation and increased grip strength
- Second handle allows for optimal weight distribution

- Designed to cut soft metal (copper/aluminum)
- Guillotine style head (ESG105LX)
- Equipped with retraction stop to aid in time and battery savings
- Hardened blades for increased longevity



ESC85LX



ESG50LX

SPECIFICATIONS

- Length: 15-3/4" (400mm)
- Width: 3-1/8" (80mm)
- Height: 13" (330mm)
- Weight: 9.8 lbs (4.4kg)

CAPACITY

- 2" (50mm) diameter

ERGONOMICS

- Single trigger activation reduces repetitive motion injuries
- 350° head rotation enhances adjustability and reduces user effort

ESG50LX

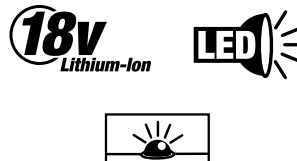
CAT. NO.	UPC NO.	DESCRIPTION
ESG50LX1	61242	Cable Cutter, Li-ion, 50mm STD, 120V
ESG50LX12	61243	Cable Cutter, Li-ion, 50mm STD, 12V
ESG50LX22	61244	Cable Cutter, Li-ion, 50mm STD, 230V
ESG50LX120	61245	Cable Cutter, Li-ion, 50mm STD, 120V AC
ESG50LX230	61246	Cable Cutter, Li-ion, 50mm STD, 230V AC
ESG50LXB	61101	Cable Cutter, Li-ion, 50mm STD, Bare

ACCESSORIES

CAT. NO.	UPC NO.	DESCRIPTION
05167	05167	18V 4.0Ah Li-ion Battery
52178	52178	120V Li-ion Battery Charger
52179	52179	230V Li-ion Battery Charger
52180	52180	12V Li-ion Battery Charger
KK120LGL	10118	Carrying Case with Inserts
12274	12274	Carrying Strap
ESG50ES	04181	Blade, Cutting
ESG50EF1	04184	Head, Cutting
ES85E	05090	Cutting Blade (2/tool)

ESC85LX

CAT. NO.	UPC NO.	DESCRIPTION
ESC85LX11	61275	Cable Cutter, Li-ion, 85mm STD, 120V
ESC85LX12	61276	Cable Cutter, Li-ion, 85mm STD, 12V
ESC85LX22	61277	Cable Cutter, Li-ion, 85mm STD, 230V
ESC85LX120	61278	Cable Cutter, Li-ion, 85mm STD, 120V AC
ESC85LX230	61279	Cable Cutter, Li-ion, 85mm STD, 230V AC
ESC85LXB	61280	Cable Cutter, Li-ion, 85mm STD, Bare



PISTOL STYLE CABLE CUTTERS

ESG105LX, ESC105LX

- Designed to cut soft metals (copper/aluminum)
- Largest diameter cutter available
- Scissor style blades (ESC105LX)
- Guillotine style head (ESG105L)
- Auxiliary handle for better maneuverability

SPECIFICATIONS

- Length: 23-3/4" (604mm)
- Width: 3-1/8" (80mm)
- Weight: 22 lbs (9.9kg)
- Height: 13" (330mm)

CAPACITY

- 4" diameter (105mm) Communications, Cu & Al Power Cables



ESC105LX

CAT. NO.	UPC NO.	DESCRIPTION
ESC105LX11	61251	Cable Cutter, Li-ion, 105mm STD, 120V
ESC105LX12	61252	Cable Cutter, Li-ion, 105mm STD, 12V
ESC105LX22	61253	Cable Cutter, Li-ion, 105mm STD, 230V
ESC105LX120	61254	Cable Cutter, Li-ion, 105mm STD, 120V AC
ESC105LX230	61255	Cable Cutter, Li-ion, 105mm STD, 230V AC
ESC105LXB	61256	Cable Cutter, Li-ion, 105mm STD, Bare

ESG105LX

CAT. NO.	UPC NO.	DESCRIPTION
ESG105LX11	61263	Cable Cutter, Li-ion, 105mm STD, 120V
ESG105LX12	61264	Cable Cutter, Li-ion, 105mm STD, 12V
ESG105LX22	61265	Cable Cutter, Li-ion, 105mm STD, 230V
ESG105LX120	61266	Cable Cutter, Li-ion, 105mm STD, 120V AC
ESG105LX230	61267	Cable Cutter, Li-ion, 105mm STD, 230V AC
ESG105LXB	61268	Cable Cutter, Li-ion, 105mm STD, Bare

ERGONOMICS

- Single trigger activation reduces repetitive motion injuries
- 350° head rotation enhances adjustability and reduces user effort
- Handle angle supports decreased wrist deviation and increased grip strength
- Second handle allows for optimal weight distribution

ACCESSORIES

CAT. NO.	UPC NO.	DESCRIPTION
52176	52176	18V 4.0Ah Li-ion Battery
52178	52178	120V Li-ion Battery Charger
52179	52179	230V Li-ion Battery Charger
52180	52180	12V Li-ion Battery Charger
10118	10118	Carrying Case
12274	12274	Carrying Strap

Not for cutting ACSR, guy strand, or other cables and steel strands.

CUTTING REMOTES



SPECIFICATIONS	SDG45	SDG55	SDG85	SDG105	SDK105
Length	16-5/8" (423mm)	18-18" (460mm)	21" (533mm)	23-3/4" (604mm)	20" (510mm)
Weight	8.38 lbs (3.8kg)	12.35 lbs (5.6kg)	9.48 lbs (4.3kg)	16.98 lbs (7.7kg)	17 lbs (7.7kg)
Connector	3/8" NPT Male (Screw-Type)	3/8" NPT Male (Screw-Type)	3/8" NPT Male (Screw-Type)	3/8" NPT Male (Screw-Type)	3/8" NPT Male (Screw-Type)
Communications, Cu & Al Power Cables	1-3/4" (50mm)	2-1/8" (55mm)	3-3/8" (85mm)	4" (105mm)	4" (105mm)
ACSR	1590 kcmil (MCM)	2515 kcmil			
STANDARD GUY STRAND	5/8" (16MM)	5/8" (16MM)			
EHS Guy Strand	1/2" (13mm)	9/16" (14mm)			
Ground Rod	5/8" (16mm)	3/4" (19mm)			
Rebar	1/2" (13mm)	5/8" (16mm)			
Wire Rope	5/8" (16mm)	5/8" (16mm)			
Copper and Aluminum Cable	1500 kcmil (MCM)	1500 kcmil (MCM)			

CUTTING CAPACITY

ACSR, GUY STRAND & STEEL CUTTING

Selection Guide for ACSR, Guy Strand & Steel Cutters

	ACSR	STD. GUY STRAND	EHS GUY STRAND	GROUND ROD	REBAR (SCHEDULE 60)
BATTERY POWERED					
ES20	336.4 kcmil (Merlin)	3/8" (9mm)		3/8" (9mm)	3/8" (9mm)
ESG25	636 kcmil (Grosbeak)	5/8" (16mm)		3/8" (9mm)	3/8" (9mm)
ESG45	1590.0 kcmil	5/8" (16mm) dia.	1/2"	5/8" (16mm) dia.	1/2" (13mm) dia.
ESG55	2515 kcmil (Joree 76/19)	5/8" (16mm)	9/16" (14mm)	3/4" (19mm)	5/8" (16mm)

COPPER AND ALUMINUM CUTTING

Selection Guide for Copper & Aluminum Cable Cutters

CABLE SIZE	CABLE SIZE																				
	AWG	#8	#6	#4	#2	#1	1/0	2/0	3/0	4/0	250 kcmil	300 kcmil	350 kcmil	400 kcmil	500 kcmil	600 kcmil	750 kcmil	1000 kcmil	1500 kcmil	2000 kcmil	
	MM	6	10	16	25	35	40	50	70	95	120	150	150	185	240	300	400	500	800	1000	
BATTERY POWERED																					
ES32	Al	•	•	•	•	•	•	•	•	•	•	•	•	•	•						
	Cu	•	•	•	•	•	•	•	•	•	•	•	•	•	•						
ESC35	Al	•	•	•	•	•	•	•	•	•	•	•	•	•	•	•	•	•			
	Cu	•	•	•	•	•	•	•	•	•	•	•	•	•	•	•	•	•	•		
ESG50	Al	•	•	•	•	•	•	•	•	•	•	•	•	•	•	•	•	•	•	•	•
	Cu	•	•	•	•	•	•	•	•	•	•	•	•	•	•	•	•	•	•	•	•
ESC105	Al	•	•	•	•	•	•	•	•	•	•	•	•	•	•	•	•	•	•	•	•
ESG105	Cu	•	•	•	•	•	•	•	•	•	•	•	•	•	•	•	•	•	•	•	•

SAFETY FIRST

The following are reminders and not intended to replace reading instruction manuals and other safety information.

- Observe all safety precautions included in the Operator's, Service, and Parts Manual shipped with each product.
- For your personal safety read and understand all instructions and warnings before using a product.
- Inspect tools, equipment, and other products before using; replace damaged, missing, or worn parts with genuine Greenlee® replacement parts.
- Make sure all hydraulic connections are clean and tight. Replace damaged or worn hoses before using.
- Do not overreach when operating tool. Always keep proper footing and balance.
- Use with specified hydraulic power unit only.
- Use all appropriate and applicable personal safety equipment as required, such as: safety shoes, hard hat, safety glasses or face shield, etc.

All company names referred to in this catalog are owned by each company.

DIAGNOSTIC REPORTS AND MAINTENANCE ALERTS TO ENSURE OPTIMUM TOOL PRODUCTIVITY



Tool Diagnostic Reporting – Use summary reports to analyze long-term trends and identify opportunities for improvement in overall tool fleet performance. Schedule reports on a daily, weekly, or monthly basis. All information from the Gator-Eye® diagnostic system is visible including; nominal pressure verification, tool amp draw and cycle count



Maintenance Alerts – Lower costs and streamline the maintenance process with the Gator Eye® system. Our preventive maintenance program can help you keep your tools well-maintained and in top running condition



Makita® 4.0Ah Battery

- The 18V LXT® Lithium-Ion 4.0Ah battery delivers 35% more run time than the 18V LXT® 3.0Ah battery, but with a minimal increase in charge time for maximum efficiency
- Up to 35% more run time than the Makita 18V LXT® Lithium-Ion 3.0Ah battery (BL1830)
- Reaches a full charge in only 40 minutes – two-times faster than leading competitors' 18V 4.0Ah batteries (some requiring up to 1 hour 30 minutes to reach a full charge)
- Fully compatible with 18V LXT® and 18V compact cordless tools that carry the star symbol

Battery information courtesy of makitatools.com



05167



3 YEAR WARRANTY

Greenlee Textron Inc. warrants to the original purchaser of these goods for use, that these products will be free from defects in workmanship and material for their useful life, excepting normal wear and abuse. This warranty is subject to the same terms and conditions contained in Greenlee Textron Inc.'s standard three-year limited warranty.

See below for information regarding product returns.

Greenlee Textron Inc. extends the following warranty to the original purchaser of these goods for use, subject to the qualifications indicated. Greenlee Textron Inc. warrants to the original purchaser for use that the products sold by it will be free from defects in workmanship and material for a period of three years for Gator® battery-powered and corded tools, including batteries from the date of purchase, provided such goods are installed, operated, maintained, and used in accordance with Greenlee Textron Inc.'s written instructions.

Ordinary wear and tear, and damage from abuse, neglect or alterations are not covered by this warranty. This warranty is null and void if instructions and operating procedures are not followed.

Greenlee Textron Inc.'s sole liability and purchaser's sole remedy for a failure of goods under this limited warranty, and for any and all claims arising out of the purchase and use of the goods, shall be limited to the repair or replacement of the goods that do not conform to this warranty, and shall be in lieu of any other liability or remedy, including, without limitation, any causes of action in negligence and strict liability.

To obtain repair or replacement service under this limited warranty, the purchaser must return the product to a Greenlee Authorized Service Center, transportation prepaid. Do not send any warranty/repair product directly to Greenlee, as it will be returned to the sender.

Tools found defective will be replaced or repaired at no charge and returned. There are no express warranties covering these goods other than as set forth above. The implied warranties of merchantability and fitness for a particular purpose are specifically excluded. Greenlee Textron Inc. assumes no liability in connection with the installation or use of this product, except as stated in this limited warranty.

Greenlee Textron Inc. will in no event be liable for incidental or consequential damages.

This limited warranty gives you specific legal rights, and you may also have other rights which vary from state to state. Some states do not allow either limitations on implied warranties, or exclusions from incidental or consequential damages, so the above limitation and exclusion may not apply to you.

Any questions pertaining to this limited warranty should be addressed to:
Greenlee / A Textron Company
4411 Boeing Drive, Rockford, IL 61109-2988 USA

Greenlee Textron Inc. has elected not to make available the informal dispute settlement mechanism which is specified in the Magnuson-Moss Warranty Act.

Note: Rental units and demonstrators used for income producing purposes are warranted for 90 days. Rental units and demonstrators which are resold are not covered under warranty by Greenlee Textron Inc. Any warranty, whether expressed or implied, rests solely with the seller.

Greenlee Textron Inc. warrants to the original purchaser of these goods for use that these products will be free from defects in workmanship and material for their useful life, excepting normal wear and abuse.



FASTER. SAFER. EASIER®



GREENLEE®

A Textron Company



www.greenlee.com MA6568 09/16

4455 Boeing Dr • Rockford, IL 61114 • USA • 800-435-0786

©2016 Greenlee Textron Inc. • An ISO 9001 Company • Printed in USA
Greenlee Textron Inc. is a subsidiary of Textron Inc.